



World Class Marine Air Conditioning & Refrigeration

# Self Contained Units

## FLOW MARINE FEATURES



TITANIUM CONDENSERS



STAINLESS STEEL CHASSIS



OVERSIZED PIPING



COPPER ON COPPER EVAPORATOR COILS



HIGH-VELOCITY BLOWERS



NON-PROPRIETARY PARTS

## TOUCH SCREEN DISPLAY & CABLES INCLUDED



EasyTouch Display



Extra Copper Lines for High Efficiency



Copper Fins



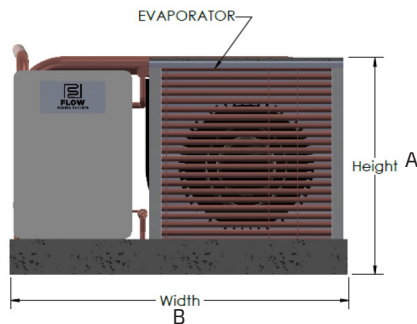
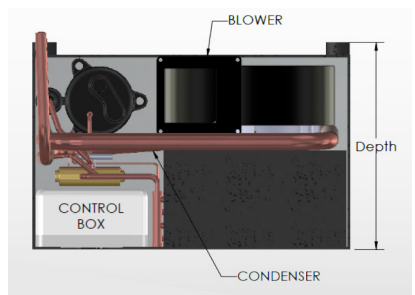
Corrosion Resistant Stainless Chassis & Drain Pan



## Self Contained Units: Specification Table

Self Contained Model	FMS07	FMS010	FMS012	FMS016	FMS024
Capacity BTU/h	7,000	10,000	12,000	16,000	24,000
Voltage	115v - 230v	115v - 230v	115v - 230v	115v - 230v	115v - 230v
Hertz/Phase	60Hz/1Ph or 50Hz/1Ph	60Hz/1Ph or 50Hz/1Ph	60Hz/1Ph or 50Hz/1Ph	60Hz/1Ph or 50Hz/1Ph	60Hz/1Ph or 50Hz/1Ph
Max Current (A)	6.1A - 3A	7.7A - 4.4A	9A - 4.7A	10.1A - 5.6A	15A
LRA (A)	29A - 15A	50A - 20A	50A - 25A	57A - 29A	63A
Power Input (W)	677w - 665w	843w - 837w	101w - 995w	110w - 1222w	2385w
Min. Fuse (A)	9A - 6A	10A - 7A	12A - 8A	13A - 8A	18A
Max. Fuse (A)	14A - 11A	15A - 12A	17A - 13A	18A - 13A	23A
Refrigerant Type	R410A	R410A	R410A	R410A	R410A
Height	11 3/4" - 298.45mm	12 3/8" - 314mm	13 3/4" - 349mm	13 3/4" - 349mm	16 1/2" - 419mm
Width	17 1/2" - 445mm	20 1/2" - 521mm	20 1/2" - 521mm	20 1/2" - 521mm	24" - 610mm
Depth	11 3/4" - 298mm	12 3/8" - 314mm	14 1/2" - 368mm	14 1/2" - 368mm	17 3/4" - 451mm
Seawater Connection	5/8" - 15.88mm	5/8" - 15.88mm	5/8" - 15.88mm	5/8" - 15.88mm	3/4" - 19.05mm
Net Weight lbs/kg	44.2lbs - 20.05kg	62lbs - 28.12kg	70lbs - 31.75kg	72.5lbs - 32.89kg	114lbs - 51.71kg

**Dimensions**  
 Height (A)  
 Width (B)  
 Depth (C)



# Compact Titanium Chillers

## FLOW MARINE FEATURES



TITANIUM  
CONDENSERS



STAINLESS STEEL  
CHASSIS



OVERSIZED  
PIPING



COPPER ON COPPER  
EVAPORATOR  
COILS



HIGH-VELOCITY  
BLOWERS



NON-PROPRIETARY  
PARTS



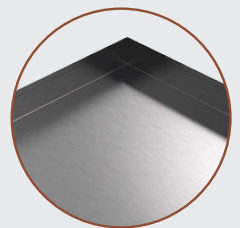
Oversized Stainless  
Steel Drain Line



Full Flow  
Condenser



Etched Titanium  
Condenser for  
Superior Heat Transfer



Corrosion Resistant  
Stainless Chassis  
& Drain Pan

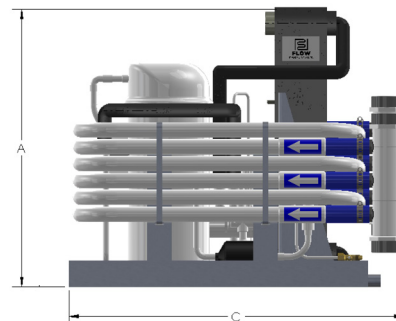
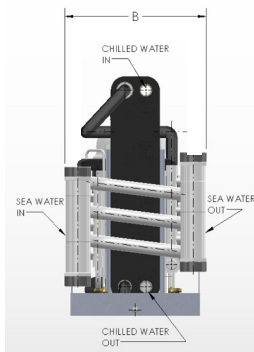


## Compact Titanium Chillers: Specification Table

Compact Titanium Chillers Model	FMW024AL	FMW024AL	FMW048AL	FMW060AL	FMW072AL
Capacity BTU/h	24,000	36,000	48,000	60,000	72,000
Voltage	208v~230v - 380v~460v	208v~230v - 380v~460v	208v~230v - 380v~460v	208v~230v - 380v~460v	208v~230v - 380v~460v
Hertz/Phase	50/60 1Ph/3Ph	50/60 3Ph Only	50/60 3Ph Only	50/60 3Ph Only	50/60 3Ph Only
Max Current (A)	9.5 / 4.8A	14.7 / 5.2A	15.2 / 5.5A	29 / 13A	31 / 15A
LRA (A)	58 / 28A	88 / 44A	83 / 41A	123 / 66A	164 / 75A
Power Input (W)	2,420	3,350	4,020	5,700	6,750
Min. Fuse (A)	12 / 6A	18 / 7A	18 / 8A	29 / 13A	33 / 17A
Max. Fuse (A)	17 / 11A	17 / 12	23 / 13A	34 / 18A	38 / 22A
Refrigerant Type	R-410A	R-410A	R-410A	R-410A	R-410A
Height	15 7/8" - 403mm	17 1/2" - 403mm	17 1/2" - 403mm	17 1/2" - 403mm	17 1/2" - 403mm
Width	12 1/8" - 308mm	12 1/8" - 308mm	12 1/8" - 308mm	12 1/8" - 308mm	12 1/8" - 308mm
Depth	24" - 610mm	24" - 610mm	24" - 610mm	24" - 610mm	24" - 610mm
Net Weight lbs/kg	108lbs - 49kg	126lbs - 58kg	126lbs - 58kg	159bs - 72kg	163lbs - 74kg

### Dimensions

Height (A)  
Width (B)  
Depth (C)





World Class Marine Air Conditioning & Refrigeration

# Chilled Water Air Handler

## FLOW MARINE FEATURES



TITANIUM CONDENSERS



STAINLESS STEEL CHASSIS



OVERSIZED PIPING



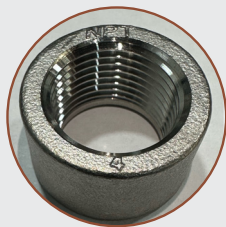
COPPER ON COPPER EVAPORATOR COILS



HIGH-VELOCITY BLOWERS



NON-PROPRIETARY PARTS



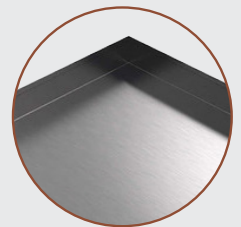
Oversized Stainless Steel Drain Line



Extra Copper Lines for High Efficiency



Copper Fins



Corrosion Resistant Stainless Chassis & Drain Pan

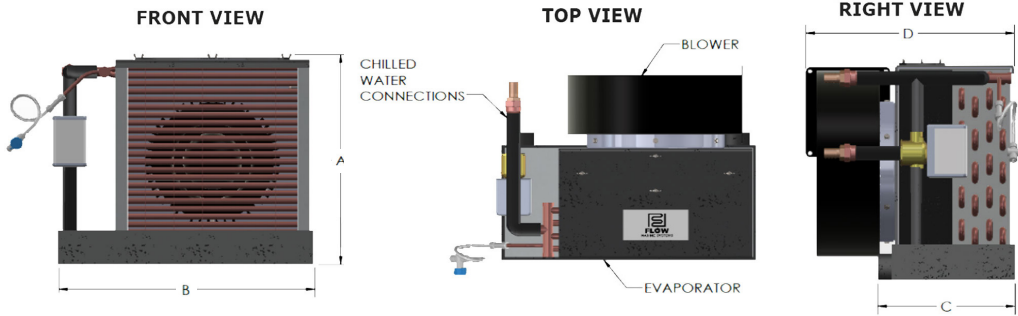


## Chilled Water Air Handler: Specification Table

Chilled Water Air Handlers Model	FMZ07	FMZ010	FMZ012	FMZ016	FMZ018	FMZ024	FMZ036
Capacity BTU/h	7,000	10,000	12,000	16,000	18,000	24,000	36,000
Voltage	230v 1Ph	230v 1Ph	230v 1Ph	230v 1Ph	230v 1Ph	230v 1Ph	230v 1Ph
Max Current (A)	2A	2A	2.5A	2.5A	2.5A	3.5A	3.5A
Min. Fuse (A)	3A	3A	3.5A	3.5A	3.5A	4.5A	4.5A
Max. Fuse (A)	5A	5A	5.5A	5.5A	5.5A	6.5A	6.5A
Optional Electric Heater(A)	4.2A (1,000W)	4.2A (1,000W)	4.2A (1,000W)	4.2A (1,000W)	4.2A (1,000W)	8.4A (2,000W)	8.4A (2,000W)
Min. Fuse (A) W/ Heater	7A	7A	7A	7A	7A	12A	12A
Max. Fuse (A) W/ Heater	10A (208v~230v)	10A (208v~230v)	10A (208v~230v)	10A (208v~230v)	10A (208v~230v)	15A (208v~230v)	15A (208v~230v)
Height	11 1/2" - 292.1mm	13 1/4" - 337mm	14 1/2" - 368mm	14 3/4" - 375mm	14 3/4" - 375mm	15 13/4" - 400mm	17 1/4" - 438mm
Width	14" - 356mm	14" - 356mm	16" - 406mm	17 1/4" - 438mm	17 1/4" - 438mm	17 1/4" - 438mm	22 3/4" - 578mm
Pan Depth	7 1/8" - 181mm	8 1/4" - 209mm	8 1/2" - 216mm	9 1/8" - 232mm	9 1/8" - 232mm	9 1/8" - 232mm	12 1/4" - 311mm
Depth Including Blower	11 1/4" - 286mm	13" - 330mm	14 1/2" - 368mm	15" - 381mm	15" - 381mm	15 1/4" - 387mm	19" - 483mm
Chilled Water Connections	1/2" - 12.7mm	1/2" - 12.7mm	1/2" - 12.7mm	1/2" - 12.7mm	3/4" - 19.05mm	3/4" - 19.05mm	3/4" - 19.05mm
Net Weight lbs/kg	22.4lbs - 10.16kg	27.4lbs - 12.421kg	37lbs - 16.78kg	45.6bs - 20.68kg	45.6bs - 20.68kg	47.5lbs - 21.54kg	74lbs - 34kg

**Dimensions**

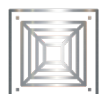
- Height (A)
- Width (B)
- Pan Depth (C)
- Depth with Blower (D)



**FLOW MARINE  
FEATURES**



TITANIUM  
CONDENSERS



STAINLESS STEEL  
CHASSIS



OVERSIZED  
PIPING



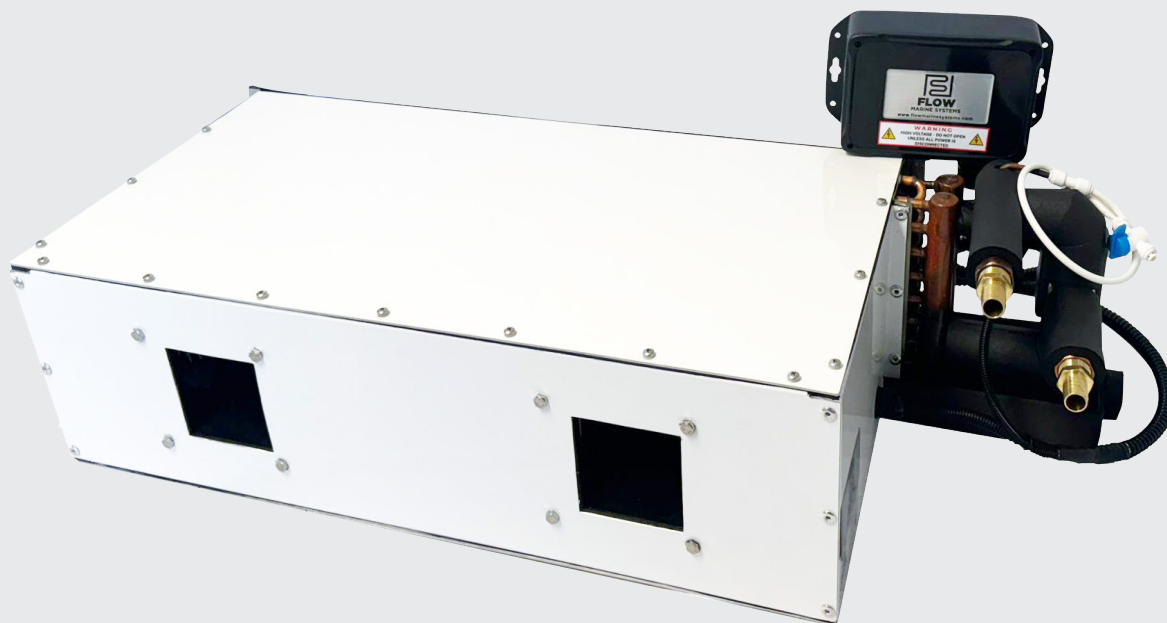
COPPER ON COPPER  
EVAPORATOR  
COILS



HIGH-VELOCITY  
BLOWERS



NON-PROPRIETARY  
PARTS



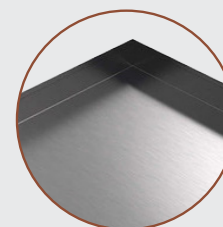
Oversized  
Stainless Steel  
Drain Line



Extra Copper Lines  
for High Efficiency



Copper Fins



Corrosion Resistant  
Stainless Chassis  
& Drain Pan

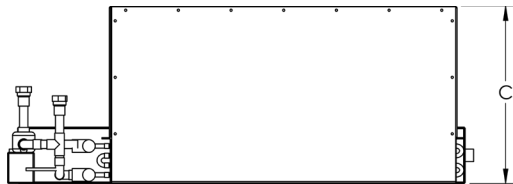
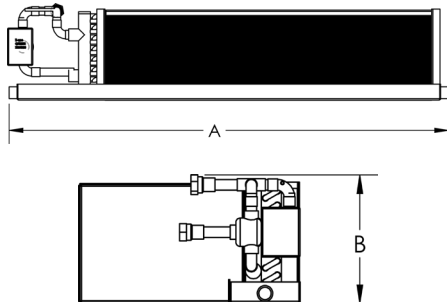


## Horizontal Chilled Water Air Handler: Specification Table

Horizontal Chilled Water Air Handlers Model	FMZ007H	FMZ012H	FMZ018H	FMZ024H	FMZ036H
Capacity BTU/h	7,000	12,000	18,000	24,000	36,000
Voltage	230v 1Ph	230v 1Ph	230v 1Ph	230v 1Ph	230v 1Ph
Max Current (A)	2A	2.5A	4A	4A	5A
Min. Fuse (A)	3A	3.5A	5A	5A	7A
Max. Fuse (A)	5A	5A	5.5A	5.5A	5.5A
Optional Electric Heater(A)	4.2A (1,000W)	4.2A (1,000W)	4.2A (1,000W)	8.4A (2,000W)	8.4A (2,000W)
Min. Fuse (A) W/ Heater	7A	7A	7A	12A	12A
Max. Fuse (A) W/ Heater	10A	10A	10A </td <td>15A</td> <td>15A</td>	15A	15A
Height	6 1/2" - 165mm	8 1/2" - 216mm	8 1/2" - 216mm	8 1/2" - 216mm	8 1/2" - 216mm
Width	20 1/2" - 521mm	20 1/2" - 521mm	31 1/2" - 800mm	41 1/2" - 1054mm	51 1/2" - 1308mm
Depth	13 1/4" - 337mm	13 3/4" - 350mm	13 3/4" - 350mm	15 3/4" - 400mm	16 3/4" - 462mm
Chilled Water Connections	1/2"	1/2"	3/4"	3/4"	3/4"

### Dimensions

Width (A)  
Height (B)  
Depth (C)



FLOW MARINE  
FEATURES



TITANIUM  
CONDENSERS



STAINLESS STEEL  
CHASSIS



OVERSIZED  
PIPING



COPPER ON COPPER  
EVAPORATOR  
COILS



HIGH-VELOCITY  
BLOWERS



NON-PROPRIETARY  
PARTS



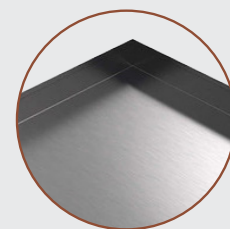
Oversized  
Stainless Steel  
Drain Line



Extra Copper Lines  
for High Efficiency



Copper Fins



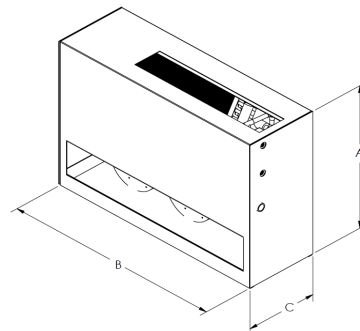
Corrosion Resistant  
Stainless Chassis  
& Drain Pan



## Vertical Chilled Water Air Handler: Specification Table

Vertical Chilled Water Air Handlers Model	FMZ007V	FMZ012V	FMZ018V	FMZ024V	FMZ036V
Capacity BTU/h	7,000	12,000	18,000	24,000	36,000
Voltage	230v 1Ph	230v 1Ph	230v 1Ph	230v 1Ph	230v 1Ph
Max Current (A)	2A	2A	4A	6A	8A
Min. Fuse (A)	3A	3A	5A	7A	9A
Max. Fuse (A)	5A	5A	7A	9A	11A
Optional Electric Heater(A)	4.2A (1,000W)	4.2A (1,000W)	4.2A (1,000W)	8.4A (2,000W)	8.4A (2,000W)
Min. Fuse (A) W/ Heater	7A	7A	7A	12A	12A
Max. Fuse (A) W/ Heater	10A	10A	10A	15A	15A
Height	19 1/4" - 489mm	21" - 534mm	21" - 534mm	21" - 534mm	21" - 534mm
Width	20 1/2" - 521mm	20 1/2" - 521mm	31" - 788mm	40 1/2" - 1029mm	51 1/2" - 1308mm
Depth	10" - 254mm	10" - 254mm	10" - 254mm	10" - 254mm	10" - 254mm
Chilled Water Connections	1/2"	1/2"	3/4"	3/4"	3/4"

**Dimensions**  
 Width (A)  
 Height (B)  
 Depth (C)





World Class Marine Air Conditioning & Refrigeration

# Direct Expansion Condenser

## FLOW MARINE FEATURES



TITANIUM CONDENSERS



STAINLESS STEEL CHASSIS



OVERSIZED PIPING



COPPER ON COPPER EVAPORATOR COILS



HIGH-VELOCITY BLOWERS

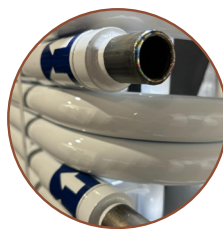


NON-PROPRIETARY PARTS

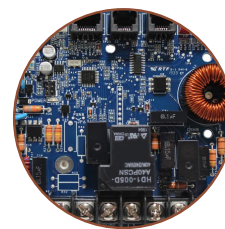
OPTIONS AVAILABLE: 410A & 407C & CUSTOMIZABLE



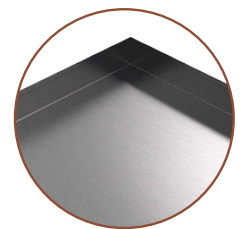
Oversized Stainless Steel Drain Line



Full Flow Condenser



Unity Control Board



Corrosion Resistant Stainless Chassis & Drain Pan

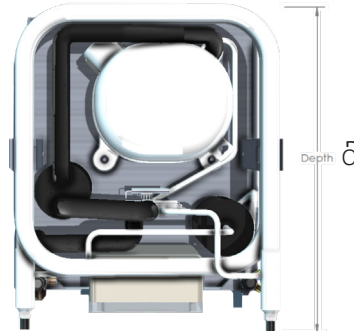
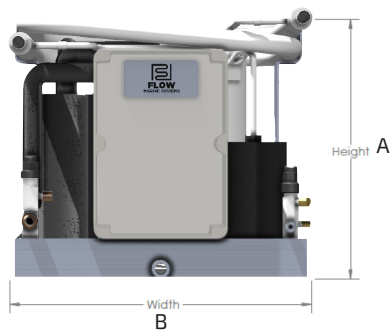


## Direct Expansion Condenser: Specification Table

DX Condensers Model	FMD007	FMD010	FMD012	FMD016	FMD024	FMD030	FMD036	FMD038
Capacity BTU/h	7,000	10,000	12,000	16,000	24,000	30,000	36,000	48,000
Voltage	115v or 230v	115v or 230v	115v or 230v	115v or 230v	115v or 230v	115v or 230v	115v or 230v	115v or 230v
Hertz/Phase	60Hz/1Ph or 50Hz/1Ph	60Hz/1Ph or 50Hz/1Ph	60Hz/1Ph or 50Hz/1Ph	60Hz/1Ph or 50Hz/1Ph	60Hz/1Ph or 50Hz/1Ph	60Hz/1Ph or 50Hz/1Ph	60Hz-1Ph or 3Ph 50Hz-1Ph or 3Ph	60Hz-1Ph or 3Ph 50Hz-1Ph or 3Ph
Max Current (A)	6.1A - 3A	7.7A - 4.4A	9A - 4.7A	10.1A - 5.6A	15A	12.3A	13A - 14.7A - 6.6A	15.2A - 24A - 15A
LRA (A)	29A - 15A	50A - 20A	50A - 25A	57A - 29A	63A	79A	75A - 88A - 44A	83A - 137A - 76A
Power Input (W)	677 W - 665 W	843 W - 837 W	1015 W - 995 W	1109 W - 1222 W	2385 W	2885 W	3,350	4,020
Min. Fuse (A)	9A - 6A	10A - 7A	12A - 8A	13A - 8A	18A	15A	16A - 18A - 8A	18A - 26A - 18A
Max. Fuse (A)	14A - 11A	15A - 12A	17A -13A	18A - 13A	23A	20A	21A - 23A - 12A	23A - 30A - 22A
Refrigerant Type	R-407C / R-410A	R-407C / R-410A	R-407C / R-410A	R-407C / R-410A	R-407C / R-410A	R-407C / R-410A	R-407C / R-410A	R-407C / R-410A
Height	12 1/2" - 317.5mm	12 3/4" - 324mm	12 3/4" - 324mm	13 1/2" - 343mm	16" - 406mm	18" - 457mm	18" - 457mm	19 3/4" - 502mm
Width	12 1/16" - 306.4mm	12 1/16" - 306.4mm	12 1/4" - 311mm	12 1/4" - 311mm	15 3/4" - 400mm	15 3/4" - 400mm	15 3/4" - 400mm	15 3/4" - 400mm
Depth	15 1/2" - 394mm	15 1/2" - 394mm	15 1/2" - 394mm	15 1/2" - 394mm	19 1/2" - 495mm	19 1/2" - 495mm	19 1/2" - 495mm	19 1/2" - 495mm
Seawater Connection	5/8" - 15.88mm	5/8" - 15.88mm	5/8" - 15.88mm	5/8" - 15.88mm	3/4" - 19.05mm	3/4" - 19.05mm	3/4" - 19.05mm	3/4" - 19.05mm
Discharge Line	1/4" - 7mm	1/4" - 7mm	1/4" - 7mm	1/4" - 7mm	3/8" - 10mm	3/8" - 10mm	3/8" - 10mm	3/8" - 10mm
Suction Line	3/8" - 10mm	3/8" - 10mm	3/8" - 10mm	3/8" - 10mm	1/2" - 13mm	3/4" - 20mm	3/4" - 20mm	3/4" - 20mm
Net Weight Lbs/KG	37.9lbs - 17.19kg	47.5lbs - 20.72kg	45.8lbs - 20.77kg	46.7lbs - 21.18kg	89lbs - 40.37kg	106.4lbs - 48.25kg	102.2lbs - 46.36kg	122.2lbs - 55.43kg

### Dimensions

Height (A)  
Width (B)  
Depth (C)





World Class Marine Air Conditioning & Refrigeration

# Direct Expansion Air Handler

## FLOW MARINE FEATURES



TITANIUM CONDENSERS



STAINLESS STEEL CHASSIS



OVERSIZED PIPING



COPPER ON COPPER EVAPORATOR COILS



HIGH-VELOCITY BLOWERS



NON-PROPRIETARY PARTS

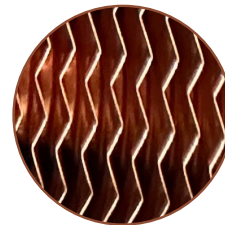
OPTIONS AVAILABLE: 410A & 407C & CUSTOMIZABLE



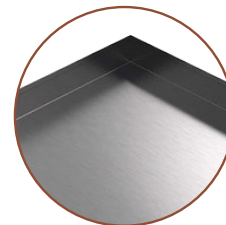
Oversized Stainless Steel Drain Line



Extra Copper Lines for High Efficiency



Copper Fins



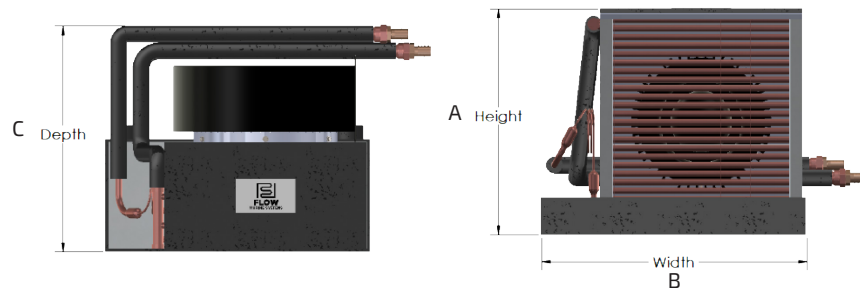
Corrosion Resistant Stainless Chassis & Drain Pan



## Direct Expansion Air Handlers: Specification Table

Direct Expansion Air Handlers Model	FMA007	FMA010	FMA012	FMA016	FMA018	FMA024
Capacity BTU/h	7,000	10,000	12,000	16,000	18,000	24,000
Voltage	115v - 230v	115v - 230v	115v - 230v	115v - 230v	115v - 230v	115v - 230v
Hertz/Phase	50/60	50/60	50/60	50/60	50/60	50/60
Max Current (A)	2A	2A	2.5A	2.5A	2.5A	3.5A
Min. Fuse (A)	3A	3A	3.5A	3.5A	3.5A	4.5A
Max. Fuse (A)	5A	5A	5.5A	5.5A	5.5A	6.5A
Refrigerant Type	R-407C / R-410A	R-407C / R-410A	R-407C / R-410A	R-407C / R-410A	R-407C / R-410A	R-407C / R-410A
Height	11 3/8" - 289mm	12" - 305mm	14 1/4" - 362mm	14" - 356mm	14" - 356mm	16 1/2" - 419mm
Width	12 1/2" - 318mm	12 1/2" - 318mm	12 1/2" - 318mm	14" - 356mm	14" - 356mm	17" - 432mm
Depth	9 3/4" - 248mm	10 1/2" - 267mm	12" - 305mm	12" - 305mm	12" - 305mm	13" - 330mm
Discharge Line	1/4" - 6.35mm	1/4" - 6.35mm	1/4" - 6.35mm	1/4" - 6.35mm	1/4" - 6.35mm	3/8" - 9.53mm
Suction Line	3/8" - 9.53mm	3/8" - 9.53mm	3/8" - 9.53mm	1/2" - 12.7mm	1/2" - 12.7mm	5/8" - 15.88mm
Net Weight lbs/kg	17.6lbs - 7.99kg	20.9lbs - 9.48kg	29lbs - 13.15kg	31.2bs - 14.15kg	31.2bs - 14.15kg	38.4bs - 17.42kg

**Dimensions**  
 Height (A)  
 Width (B)  
 Depth (C)



# Titanium Marine Chillers

## FLOW MARINE FEATURES



TITANIUM  
CONDENSERS



STAINLESS STEEL  
CHASSIS



OVERSIZED  
PIPING



COPPER ON COPPER  
EVAPORATOR  
COILS



HIGH-VELOCITY  
BLOWERS



NON-PROPRIETARY  
PARTS



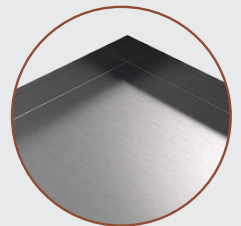
Oversized Stainless  
Steel Drain Line



Full Flow  
Condenser



Etched Titanium  
Condenser for  
Superior Heat Transfer



Corrosion Resistant  
Stainless Chassis  
& Drain Pan



# Titanium Marine Chillers: Specification Table

Titanium Marine Chillers Model	FMW048AS	FMW060AS	FMW072AS	FMW090AS	FMW120AS	FMW150AS	FMW180AS
Capacity BTU/h	48,000	60,000	72,000	90,000	120,000	150,000	180,000
Voltage	208v~230v - 380v~460v	208v~230v - 380v~460v	208v~230v - 380v~460v	208v~230v - 380v~460v	208v~230v - 380v~460v	208v~230v - 380v~460v	208v~230v - 380v~460v
Hertz/Phase	50/60 1Ph/3Ph	50/60 3Ph Only	50/60 3Ph Only	50/60 3Ph Only	50/60 3Ph Only	50/60 3Ph Only	50/60 3Ph Only
Max Current (A)	15.2 / 5.5A	29 / 13A	31 / 15A	36 / 16.4	44 / 22A	59 / 31A	74 / 34A
LRA (A)	83 / 41A	123 / 66A	164 / 75A	195 / 95A	239 / 125A	300 / 150A	340 / 179A
Power Input (W)	4,020	5,700	6,750	8,370	11,100	14,000	16,300
Min. Fuse (A)	18 / 8A	29 / 13A	33 / 17A	38 / 18A	46 / 24A	64 / 33A	76 / 35A
Max. Fuse (A)	23 / 13A	34 / 18A	38 / 22A	43 / 23A	51 / 29A	66 / 38A	81 / 40A
Refrigerant Type	R-410A	R-410A	R-410A	R-410A	R-410A	R-410A	R-410A
Height	22 7/8" - 581mm	22 7/8" - 581mm	22 7/8" - 581mm	23 1/8" - 577mm	23 1/8" - 577mm	24" - 610mm	24" - 610mm
Width	12 1/8" - 308mm	12 1/8" - 308mm	12 1/8" - 308mm	17" - 432mm	17" - 432mm	17" - 432mm	17" - 432mm
Depth	24" - 610mm	24" - 610mm	24" - 610mm	26" - 660mm	26" - 660mm	26" - 660mm	26" - 660mm
Net Weight lbs/kg	128lbs - 58kg	173lbs - 79kg	175lbs - 80kg	240bs - 109kg	256lbs - 117kg	259lbs - 134kg	310lbs - 140kg

## Dimensions

Height (A)  
Width (B)  
Depth (C)

